

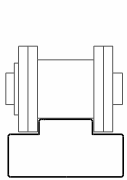
OVERVIEW OF CHAIN GUIDES

For roller chains (DIN 8187) and round link chains (DIN 766/764)

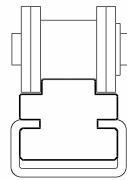
Murtfeldt offers an extensive standard range of guides for roller chains. We have a total of 20 different types of guide for roller chains and four for round link chains. You can also choose

between our high-quality Original Material "S"[®] Green and our more economical Material "S"[®] 1000 Green.

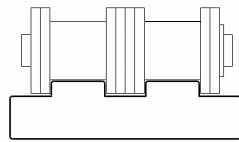
Chain guides for roller chains as per DIN 8187 (DIN 8188 catalogue on request)



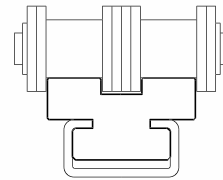
Type T – page 69



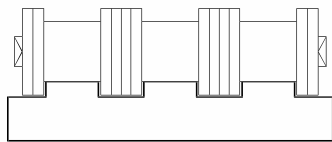
Type CT – page 70



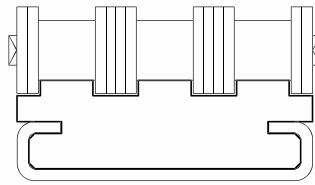
Type T-Duplex – page 71



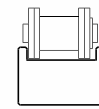
Type CT-Duplex – page 72



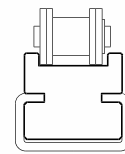
Type T-Triplex – page 73



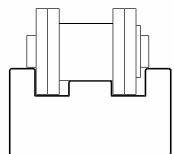
Type CT-Triplex – page 74



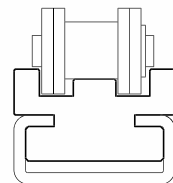
Type TU – page 75



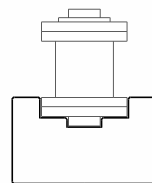
Type CTU – page 75



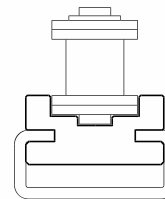
Type TS – page 76



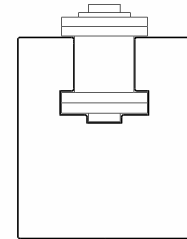
Type CTS – page 77



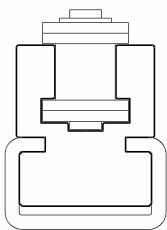
Type U – page 78



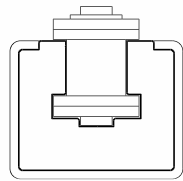
Type CU – page 79



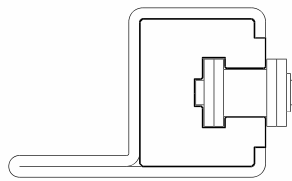
Type K – page 80



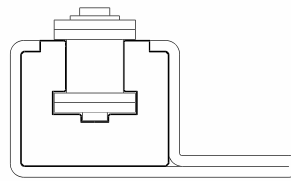
Type CK – page 81



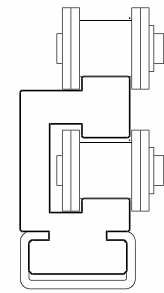
Type CKG – page 82



Type CKG 14H – page 83

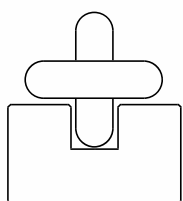


Type CKG 15V – page 84

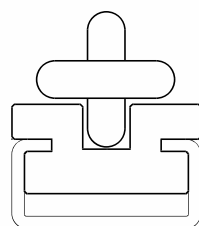


Type ETA – page 85

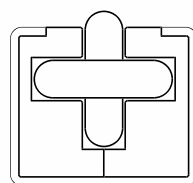
Chain guides for round link chains as per DIN 766/764



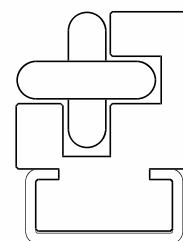
Type R – page 86



Type CRU – page 86



Type CRG – page 87



Type CRO – page 87