

Chain		Pitch	Inner width	Inner link width	Outer plate width	Roller Ø	Pin Ø	Plate height	Projection over connecting link	Width over pin	Bearing area	Breaking load ISO	Breaking load	Weight	Connecting links		
	ISO	p	b <sub>1</sub> min.	b <sub>2</sub> max.	b <sub>3</sub> min.	d <sub>1</sub> max.	d <sub>2</sub> max.	g max.	k max.	l <sub>1</sub> max.	f	F <sub>B</sub> min.	F <sub>B</sub> min.	q ≈	No.		
No.	Ind.	No.	mm	inch	mm	mm	mm	mm	mm	mm	cm <sup>2</sup>	kN	kN	kg/m	No.		
25	<sup>2</sup>	04 C-1	6,350	¼	3,18	4,80	4,85	3,30	2,31	6,0	2,5	9,0	0,11	3,5	3,5	0,13	11,15
35	<sup>2</sup>	06 C-1	9,525	⅜	4,68	7,47	7,52	5,08	3,58	9,1	3,3	13,2	0,27	7,9	10,2	0,35	11,12,15
40		08 A-1	12,700	½	7,85	11,15	11,28	7,95	3,96	12,0	3,9	17,8	0,44	14,1	16,5	0,60	11,12,15
50		10 A-1	15,875	⅝	9,40	13,80	13,93	10,16	5,08	15,0	4,1	21,8	0,70	22,2	30,0	1,01	11,12,15
60	<sup>9</sup>	12 A-1	19,050	¾	12,57	17,70	17,85	11,91	5,94	18,0	4,6	26,9	1,05	31,8	40,0	1,58	11,111,12,15
80	<sup>9</sup>	16 A-1	25,400	1	15,75	22,50	22,70	15,88	7,92	24,1	5,4	33,5	1,78	56,7	69,0	2,36	11,111,12
100	<sup>9</sup>	20 A-1	31,750	1 ¼	18,90	27,40	27,60	19,05	9,53	30,1	6,1	41,1	2,61	88,5	92,5	3,80	111,12
120	<sup>9</sup>	24 A-1	38,100	1 ½	25,22	35,30	35,60	22,23	11,10	36,2	6,6	50,8	3,92	127,0	139,0	5,40	111,12
140	<sup>9</sup>	28 A-1	44,450	1 ¾	25,22	37,00	37,30	25,40	12,70	42,2	7,4	54,9	4,70	172,4	178,5	7,30	111,12
160	<sup>9</sup>	32 A-1	50,800	2	31,55	45,00	45,30	28,58	14,27	48,2	7,9	65,5	6,42	226,8	231,0	9,90	111,12
200	<sup>9</sup>	40 A-1	63,500	2 ½	37,85	54,70	55,00	39,68	19,84	60,3	10,0	80,3	10,85	353,8	387,0	16,50	111,12

**Heavy duty design with reinforced side plates and enlarged bearing areas**

50 H		-	15,875	⅝	9,40	14,60	14,73	10,16	5,08	15,0	4,1	23,4	0,75	22,2	32,0	1,18	11
60 H	<sup>9</sup>	-	19,050	¾	12,57	19,45	19,60	11,91	5,94	18,0	4,6	28,9	1,16	31,8	42,0	1,94	11
80 H	<sup>9</sup>	-	25,400	1	15,75	24,28	24,48	15,88	7,92	24,1	5,4	37,0	1,92	56,7	72,0	3,04	111
100 H	<sup>9</sup>	-	31,750	1 ¼	18,90	29,10	29,30	19,05	9,53	30,1	6,1	44,0	2,77	88,5	96,0	4,25	111
120 H	<sup>9</sup>	-	38,100	1 ½	25,22	37,00	37,30	22,23	11,10	36,2	6,6	54,0	4,13	127,0	141,0	6,40	111
140 H	<sup>9</sup>	-	44,450	1 ¾	25,22	38,70	39,00	25,40	12,70	42,2	7,4	58,0	4,94	172,4	180,0	8,30	111
160 H	<sup>9</sup>	-	50,800	2	31,55	46,90	47,20	28,58	14,27	48,2	7,9	68,0	6,70	226,8	233,0	11,50	111
200 H	<sup>9</sup>	-	63,500	2 ½	37,85	57,60	57,90	39,68	19,84	60,3	10,0	84,0	11,60	353,8	400,0	20,00	111

Electrogalvanised or nickel-plated chains on request. In this case chains may only have 80 % of the tensile strength.

<sup>2</sup> without rollers    <sup>9</sup> dismantlable designs (with cottered/split pins) on request

For details on orders and enquiries see page 131. Standard sprockets as of page 78.  
Information on the selection of chain sizes and drives as of page 118.

**Connecting links: According to ISO (...)**



No. 4 (B)

Inner link

No. 7 (A)

Outer link  
(to be riveted)

No. 11 (E)

Spring clip  
connecting link

No. 111 (S)

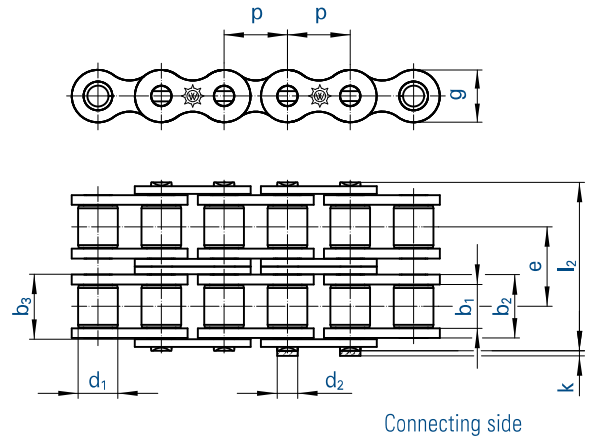
Connecting link  
with cottered pin

No. 12 (L)

Single  
cranked link

No. 15 (C)

Double  
cranked link



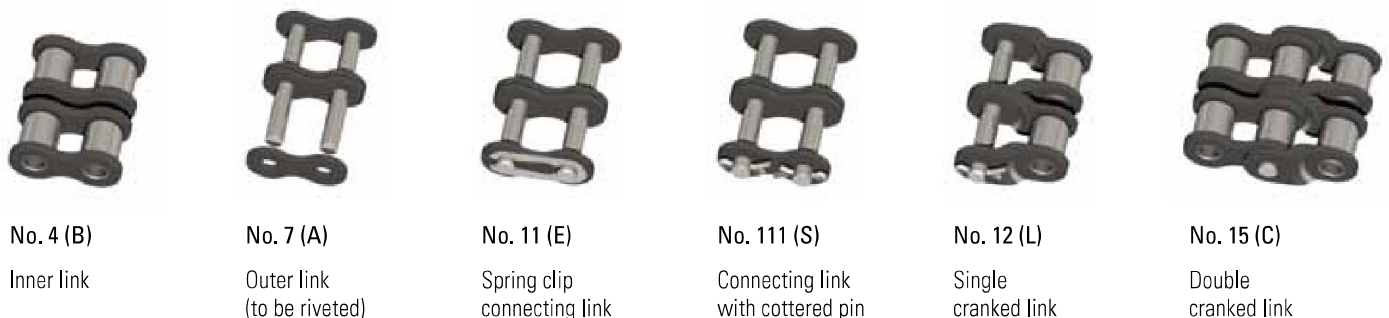
Chain		Pitch	Inner width	Inner link width	Outer plate width	Roller Ø	Pin Ø	Transverse pitch	Plate height	Projection over connecting link	Width over pin	Bearing area	Breaking load ISO	Breaking load	Weight	Connecting links		
No.	Ind.	ISO	p		b <sub>1</sub> min.	b <sub>2</sub> max.	b <sub>3</sub> min.	d <sub>1</sub> max.	d <sub>2</sub> max.	e	g max.	k max.	l <sub>2</sub> max.	f	F <sub>B</sub> min.	F <sub>B</sub> min.	q ≈	No.
		No.	mm	inch	mm	mm	mm	mm	mm	mm	mm	mm	mm	mm	cm <sup>2</sup>	kN	kN	kg/m
35-2	<sup>2</sup>	06 C-2	9,525	3/8	4,68	7,47	7,52	5,08	3,58	10,13	9,0	3,3	23,4	0,53	15,8	17,0	0,70	11,12,15
40-2		08 A-2	12,700	1/2	7,85	11,15	11,28	7,95	3,96	14,38	12,0	3,9	32,3	0,88	28,2	29,7	1,20	11,12,15
50-2		10 A-2	15,875	5/8	9,40	13,80	13,93	10,16	5,08	18,11	15,0	4,1	39,9	1,40	44,4	62,0	1,78	11,12,15
60-2	<sup>9</sup>	12 A-2	19,050	3/4	12,57	17,70	17,85	11,91	5,94	22,78	18,0	4,6	49,8	2,10	63,6	76,0	3,15	11,111,12,15
80-2	<sup>9</sup>	16 A-2	25,400	1	15,75	22,50	22,70	15,88	7,92	29,29	24,1	5,4	62,7	3,56	113,4	135,0	4,90	11,111,12,15
100-2	<sup>9</sup>	20 A-2	31,750	1 1/4	18,90	27,40	27,60	19,05	9,53	35,76	30,1	6,1	77,0	5,22	177,0	205,0	7,60	111,12
120-2	<sup>9</sup>	24 A-2	38,100	1 1/2	25,22	35,30	35,60	22,23	11,10	45,44	36,2	6,6	96,3	7,84	254,0	290,0	10,80	111,12
140-2	<sup>9</sup>	28 A-2	44,450	1 3/4	25,22	37,00	37,30	25,40	12,70	48,87	42,2	7,4	103,0	9,40	344,8	357,0	14,30	111,12
160-2	<sup>9</sup>	32 A-2	50,800	2	31,55	45,00	45,30	28,58	14,27	58,55	48,2	7,9	124,0	12,84	453,6	455,0	19,40	111,12
200-2	<sup>9</sup>	40 A-2	63,500	2 1/2	37,85	54,70	55,00	39,68	19,84	71,55	60,3	10,0	151,0	21,70	707,6	730,0	33,00	111,12

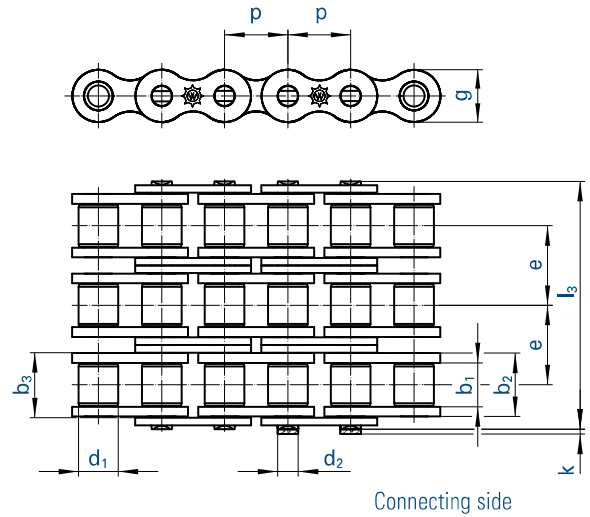
Electrogalvanised or nickel-plated chains on request. In this case chains may only have 80 % of the tensile strength.

<sup>2</sup> without rollers    <sup>9</sup> dismantlable designs (with cottered/split pins) on request

For details on orders and enquiries see page 131. Sprockets on request.  
Information on the selection of chain sizes and drives as of page 118.

Connecting links: According to ISO (...)





Chain		Pitch	Inner width	Inner link width	Outer plate width	Roller Ø	Pin Ø	Transverse pitch	Plate height	Projection over connecting link	Width over pin	Bearing area	Breaking load ISO	Breaking load	Weight	Connecting links		
	ISO	p	b <sub>1</sub> min.	b <sub>2</sub> max.	b <sub>3</sub> min.	d <sub>1</sub> max.	d <sub>2</sub> max.	e	g max.	k max.	l <sub>3</sub> max.	f	F <sub>B</sub> min.	F <sub>B</sub> min.	q ≈	No.		
No.	Ind.	No.	mm	inch	mm	mm	mm	mm	mm	mm	mm	cm <sup>2</sup>	kN	kN	kg/m	No.		
35-3	<sup>2</sup>	06 C-3	9,525	3/8	4,68	7,47	7,52	5,08	3,58	10,13	9,0	3,3	33,5	0,80	23,7	25,5	1,05	11,12,15
40-3		08 A-3	12,700	1/2	7,85	11,15	11,28	7,95	3,96	14,38	12,0	3,9	46,7	1,32	42,3	41,2	1,80	11,12,15
50-3		10 A-3	15,875	5/8	9,40	13,80	13,93	10,16	5,08	18,11	15,0	4,1	57,9	2,10	66,6	88,0	3,02	11,12,15
60-3	<sup>9</sup>	12 A-3	19,050	3/4	12,57	17,70	17,85	11,91	5,94	22,78	18,0	4,6	72,6	3,15	95,4	105,0	4,70	11,111,12,15
80-3	<sup>9</sup>	16 A-3	25,400	1	15,75	22,50	22,70	15,88	7,92	29,29	24,1	5,4	91,7	5,35	170,1	193,0	7,50	11,111,12,15
100-3	<sup>9</sup>	20 A-3	31,750	1 1/4	18,90	27,40	27,60	19,05	9,53	35,76	30,1	6,1	113,0	7,83	265,5	305,0	11,20	111,12
120-3	<sup>9</sup>	24 A-3	38,100	1 1/2	25,22	35,30	35,60	22,23	11,10	45,44	36,2	6,6	141,0	11,76	381,0	410,0	16,10	111,12
140-3	<sup>9</sup>	28 A-3	44,450	1 3/4	25,22	37,00	37,30	25,40	12,70	48,87	42,2	7,4	152,0	14,10	517,2	520,0	21,40	111,12
160-3	<sup>9</sup>	32 A-3	50,800	2	31,55	45,00	45,30	28,58	14,27	58,55	48,2	7,9	182,0	19,26	680,4	685,0	29,10	111,12
200-3	<sup>9</sup>	40 A-3	63,500	2 1/2	37,85	54,70	55,00	39,68	19,84	71,55	60,3	10,0	223,0	32,56	1061,4	1095,0	50,00	111,12

Electrogalvanised or nickel-plated chains on request. In this case chains may only have 80 % of the tensile strength.

<sup>2</sup> without rollers    <sup>9</sup> dismantlable designs (with cottered/split pins) on request

For details on orders and enquiries see page 131. Sprockets on request.  
Information on the selection of chain sizes and drives as of page 118.

### Connecting links: According to ISO (...)



No. 4 (B)  
Inner link



No. 7 (A)  
Outer link  
(to be riveted)



No. 11 (E)  
Spring clip  
connecting link



No. 111 (S)  
Connecting link  
with cottered pin



No. 12 (L)  
Single  
cranked link



No. 15 (C)  
Double  
cranked link