

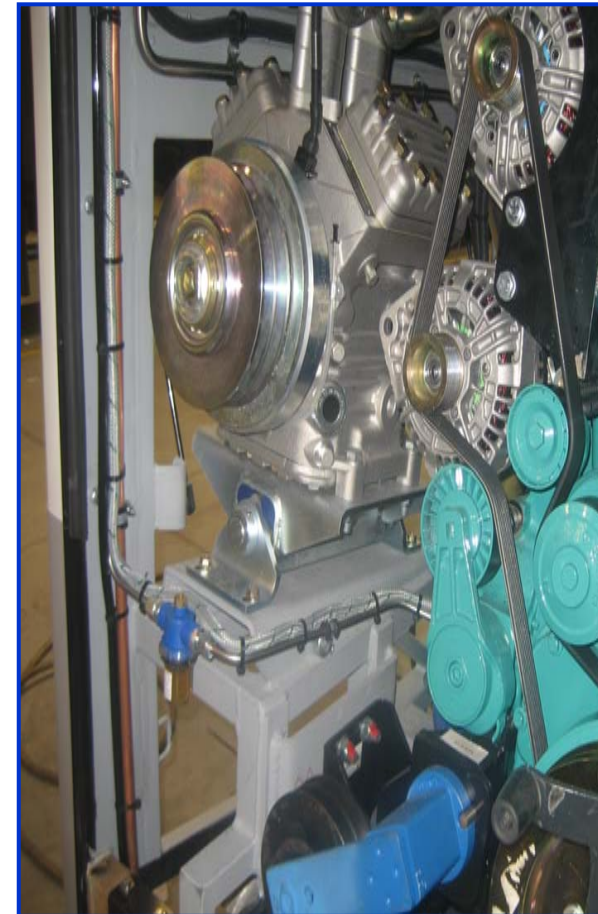


# Bus- & Truck Applications





## Compressor-Base



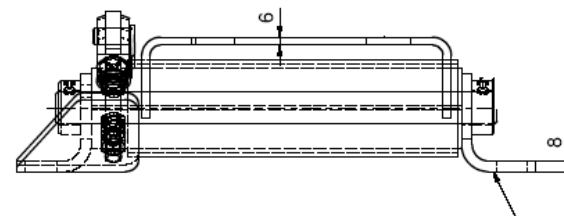
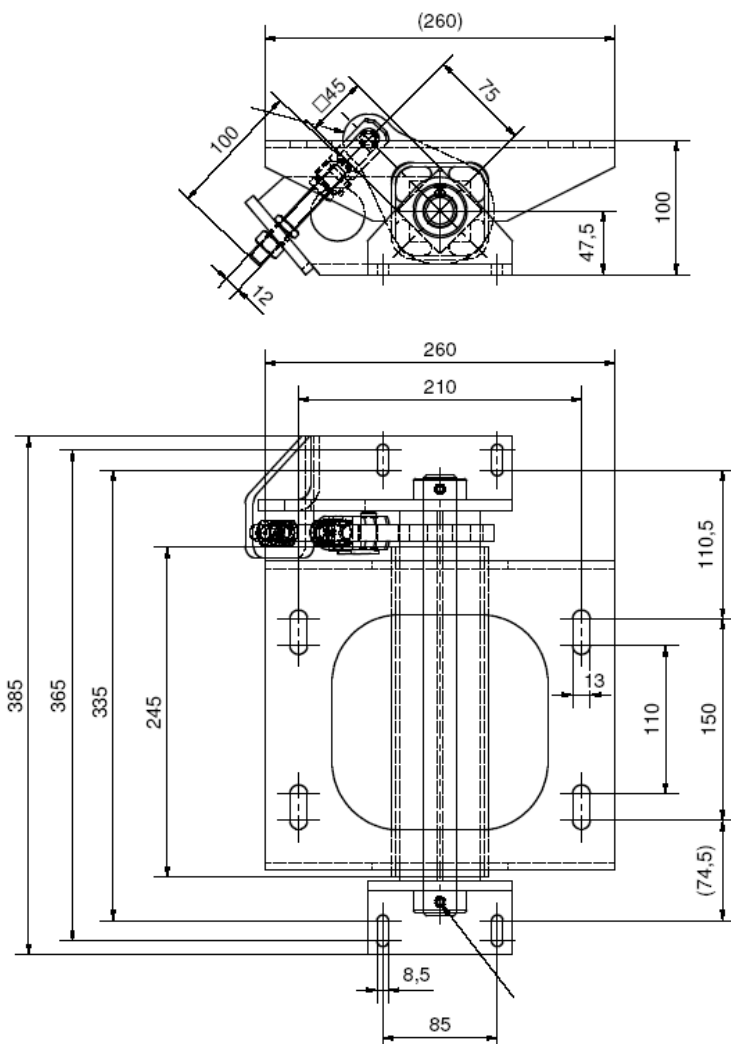


## Compressor-Base





## Compressor-Base



**Elastic Swivel-Mount for air conditioning drive**

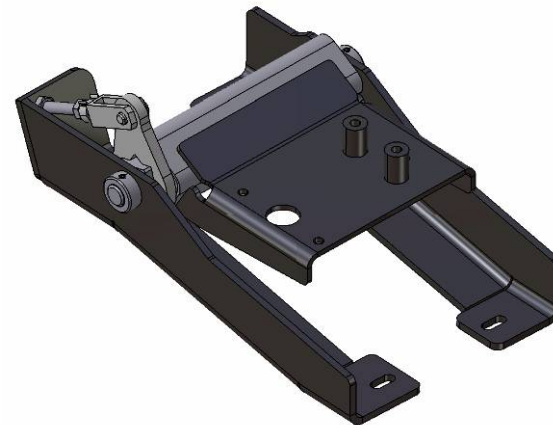
- for up to 25 KW Power transmission
- service life expectation 8-10 years
- designed for permanent temperature of 100° / temperature max 120°
- belt tensioning according recommendation of belt supplier
- the rubber is protected to oil or fuel splashes by the steel housing
- resistance must be checked based on the specific situation

Anmerkungen		Anmerkungen		Anmerkungen		Ersatz für:		Masse	
						Ersatz durch:		1:	
						Vorgang:			
						Änderungs-Zustig:		SK5169	
						Gezeichnet:		UW	
						Kontrolliert:			
						Norm:		A:	
<b>ROSTA</b>									
ROSTA-Motorwippe MB45x245 Rubmix 40						SK5230			

Alle Rechte an diesem Dokument sind mit allen Rechten vorbehalten. Dieses Dokument ist Eigentum der ROSTA oder in Teilen oder vollständig nachverwendet werden. Zudem darf es ohne unsere schriftliche Genehmigung nicht an Dritte weitergegeben oder reproduziert werden.



## Belt Tensioner & Compressor-Base





## Benefits of the ROSTA Compressor Bases

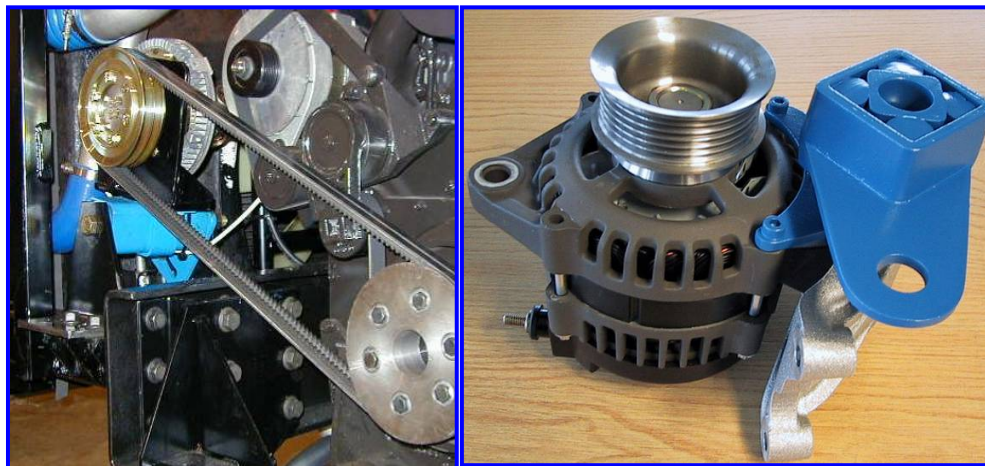
ROSTA Compressor Bases are adapted according to the special applicational purpose:

- **easy installation, no need of pneumatic components, like air pistons, etc.**
- **simple method for a maintenance-free system**
- **no wear and tear elements, extremely long life expectancy of the system**
- **low cost solution, can be incorporated in existing chassis frame work**
- **less bearings and mechanical components for belt adjustment**
- **double function: automatic tensioning device and anti-vibration mount**
- **less service intervals required (retightening of belts)**

The ROSTA motorbase is the ideal solution for the maintenance-free tensioning of the transmission belt between main engine and cooling compressor; furthermore, the device is absorbing all vibrations from the compressor towards chassis and bus body.



## Belt Tensioner



### Technical Description

- Tensioning of V-belts in trucks and motor-coaches
- Primary tensioning (motor base)
- Secondary tensioner (tensioner element)
- Drive of air-conditioning systems
- Transmission to alternator

### Customer Benefit

- Automatic compensation of belt elongation
- Extension of belt lifespan
- Maintenance free
- Noise reduction



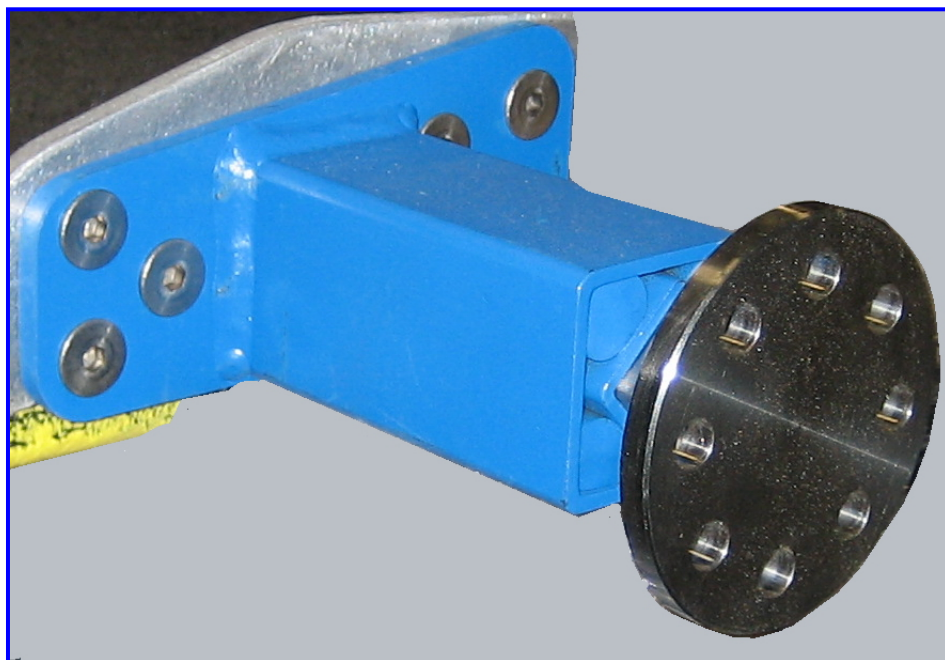
## Elbow rest suspension







## Ramp safety unit





## Hood Hinge for trucks



### Technical Description

- Suspension of truck motor hood
- Two ROSTA elements in series allowing for +/- 60° move

### Customer Benefit

- Easy maintenance handling
- Pre-tensioned ROSTA mounts are helping to open and close the heavy hood

